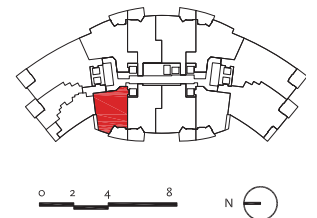


Residencia A1 | 04

1 Dorm + Den | 2 Baños

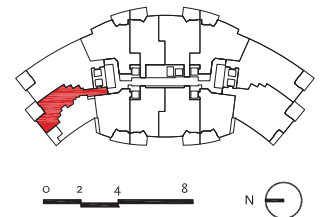
Total:	1,491 sq. ft.	138 m ²
Interior:	1,294 sq. ft.	120 m ²
Exterior:	197 sq. ft.	18 m ²



Residencia N | 00

1 Dorm + Den | 2 Baños

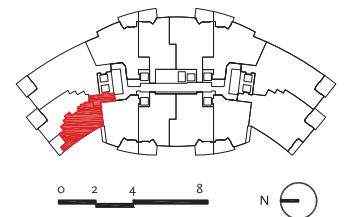
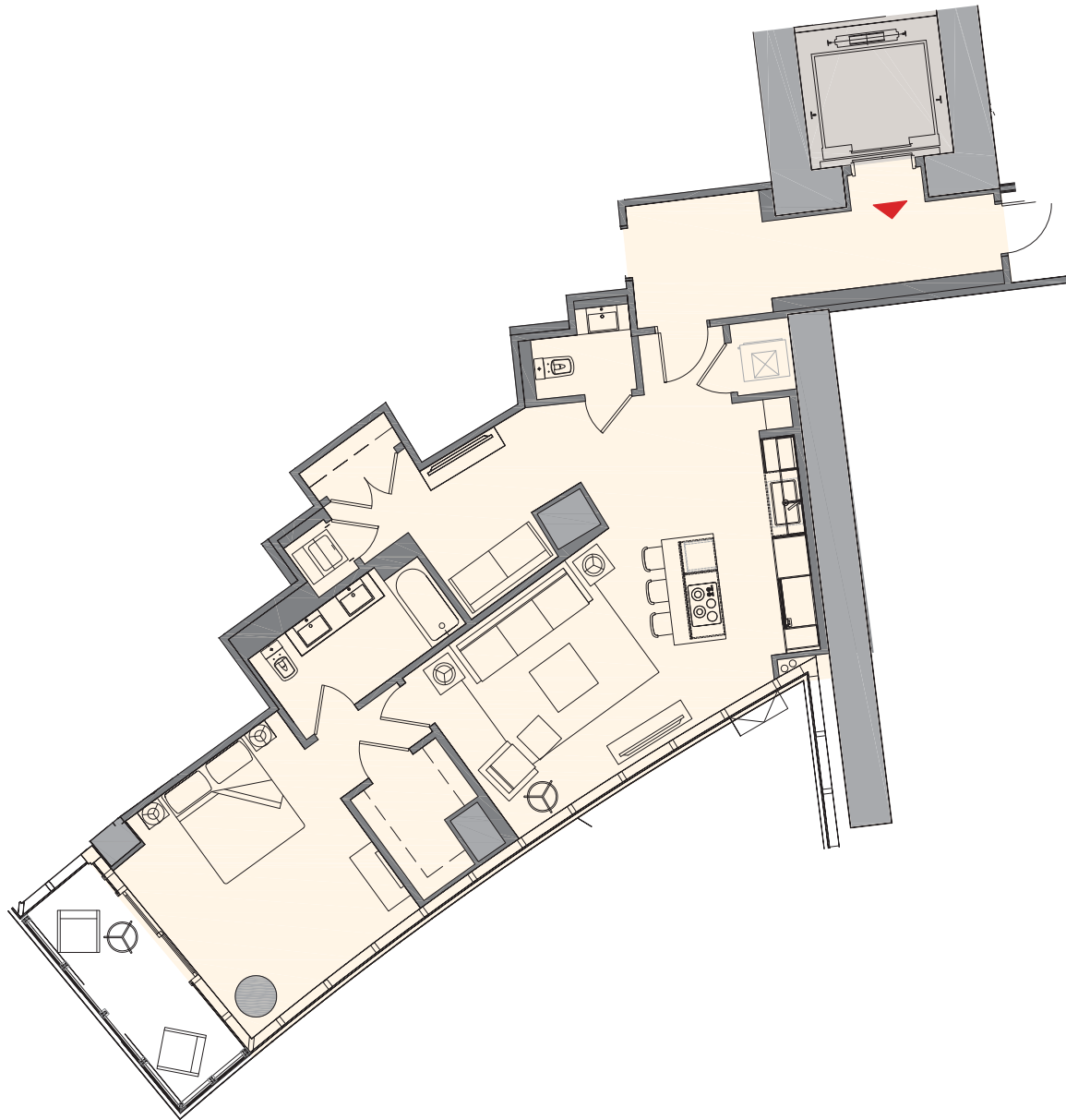
Total:	1,346 sq. ft.	125 m ²
Interior:	1,145 sq. ft.	106 m ²
Exterior:	201 sq. ft.	19 m ²



Residencia M | 02

1 Dorm + Den | 1.5 Baños

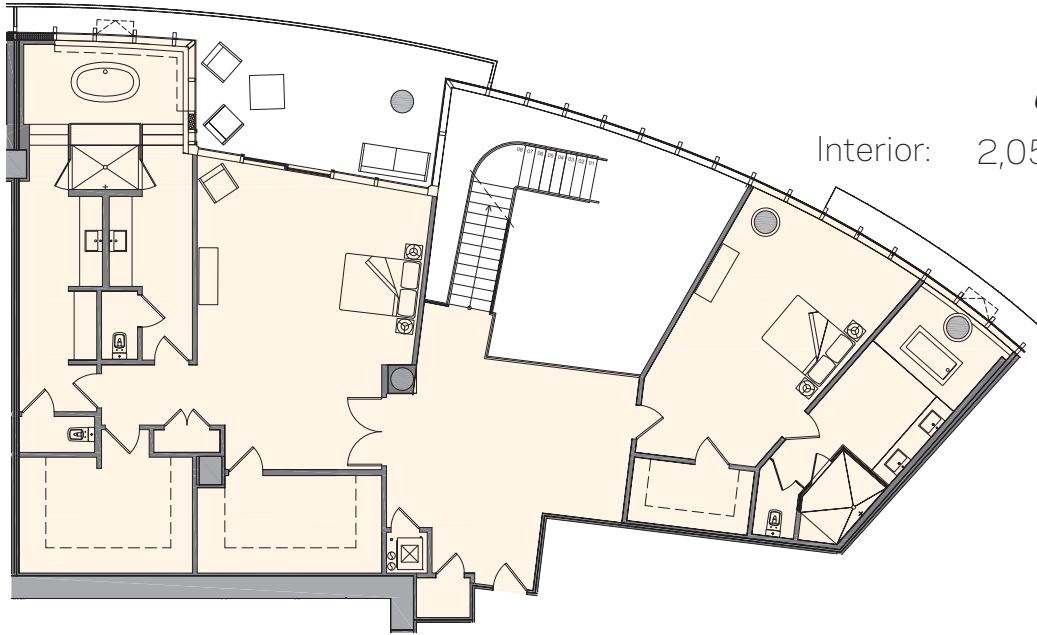
Total:	1,186 sq. ft.	110 m ²
Interior:	1,095 sq. ft.	102 m ²
Exterior:	91 sq. ft.	9 m ²



Residencia L1

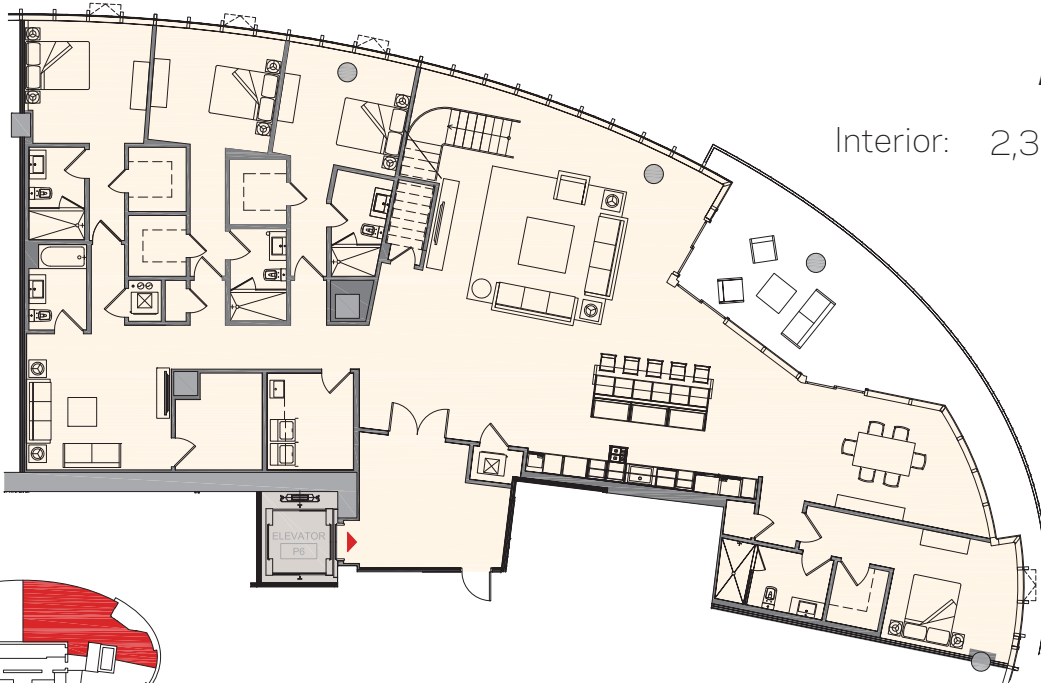
6 Dorm + Den | 7 Baños

Total: 4,764 sq. ft. | 442m²
Interior: 4,414 sq. ft. | 410m²
Exterior: 350 sq. ft. | 32m²



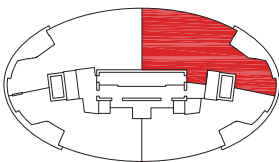
UPPER LEVEL

Interior: 2,053 sq. ft. | 191m²



LOWER LEVEL

Interior: 2,361 sq. ft. | 219m²



These drawings are conceptual only and are for the convenience of reference. They should not be relied upon as representations, express or implied, of the final detail of the residences. Units shown are examples of unit types and may not depict actual units. Stated square footages are ranges for a particular unit type and are measured to the exterior boundaries of the exterior walls and the centerline of interior demising walls and in fact vary from the area that would be determined by using the description and definition of the "Unit" set forth in the Declaration (which generally only includes the interior airspace between the perimeter walls and excludes interior structural components). Note that measurements of rooms set forth on this floor plan are generally taken at the greatest points of each given room (as if the room were a perfect rectangle), without regard for any cutouts. Accordingly, the area of the actual room will typically be smaller than the product obtained by multiplying the stated length times width. All dimensions are approximate and may vary with actual construction, and all floor plans and development plans are subject to change. All fixtures and items of finish, furnishing and decoration are for display only and are not to be included with the Unit. Consult the Prospectus for a description of those features which are to be included in the Unit.

Residencia H1

4 Dorm + Den | 5 Baños

Total: 5,149 sq. ft. | 478m²
Interior: 4,414 sq. ft. | 410m²
Exterior: 735 sq. ft. | 68m²



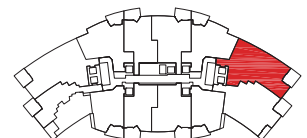
UPPER LEVEL

Interior: 2,053 sq. ft. | 190m²



LOWER LEVEL

Interior: 2,361 sq. ft. | 220m²



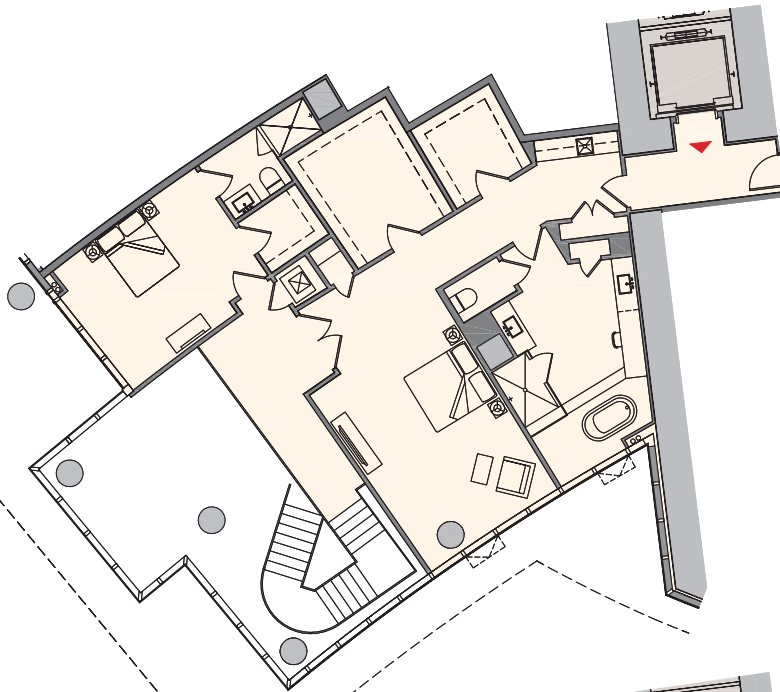
Residencia G2

4 Dorm + Den | 5 Baños

Total:	4,533 sq. ft.	421m ²
Interior:	4,116 sq. ft.	382m ²
Exterior:	417 sq. ft.	39m ²

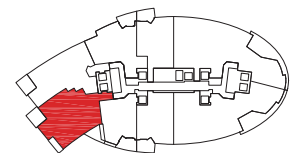
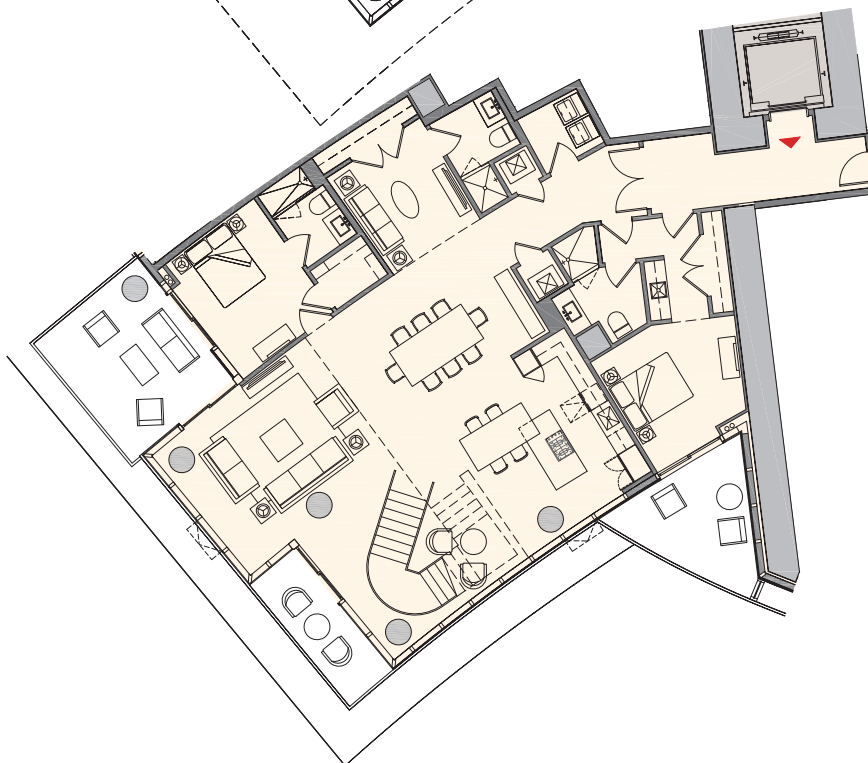
UPPER LEVEL

Interior: 1,788 sq. ft. | 166m²



LOWER LEVEL

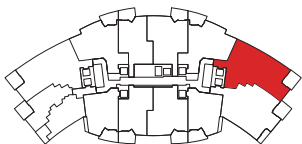
Interior: 2,328 sq. ft. | 216m²




Residencia F2 | 11

3 Dorm + Den | 4 Baños

Total:	2,578 sq. ft.	240 m ²
Interior:	2,376 sq. ft.	221 m ²
Exterior:	202 sq. ft.	19 m ²



 These drawings are conceptual only and are for the convenience of reference. They should not be relied upon as representations, express or implied, of the final detail of the residences. Units shown are examples of unit types and may not depict actual units. Stated square footages are ranges for a particular unit type and are measured to the exterior boundaries of the exterior walls and the centerline of interior demising walls and in fact vary from the area that would be determined by using the description and definition of the "Unit" set forth in the Declaration (which generally only includes the interior airspace between the perimeter walls and excludes interior structural components). Note that measurements of rooms set forth on this floor plan are generally taken at the greatest points of each given room (as if the room were a perfect rectangle), without regard for any cutouts. Accordingly, the area of the actual room will typically be smaller than the product obtained by multiplying the stated length times width. All dimensions are approximate and may vary with actual construction, and all floor plans and development plans are subject to change. All fixtures and items of finish, furnishing and decoration are for display only and are not to be included with the Unit. Consult the Prospectus for a description of those features which are to be included in the Unit.

PARAMOUNT

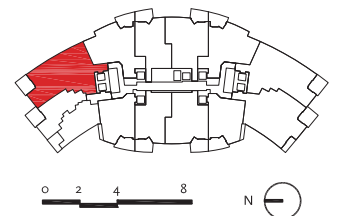
MIAMI WORLDCENTER




Residencia F1 | 01

3 Dorm + Den | 4 Baños

Total:	2,578 sq. ft.	240 m ²
Interior:	2,376 sq. ft.	221 m ²
Exterior:	202 sq. ft.	19 m ²



 These drawings are conceptual only and are for the convenience of reference. They should not be relied upon as representations, express or implied, of the final detail of the residences. Units shown are examples of unit types and may not depict actual units. Stated square footages are ranges for a particular unit type and are measured to the exterior boundaries of the exterior walls and the centerline of interior demising walls and in fact vary from the area that would be determined by using the description and definition of the "Unit" set forth in the Declaration (which generally only includes the interior airspace between the perimeter walls and excludes interior structural components). Note that measurements of rooms set forth on this floor plan are generally taken at the greatest points of each given room (as if the room were a perfect rectangle), without regard for any cutouts. Accordingly, the area of the actual room will typically be smaller than the product obtained by multiplying the stated length times width. All dimensions are approximate and may vary with actual construction, and all floor plans and development plans are subject to change. All fixtures and items of finish, furnishing and decoration are for display only and are not to be included with the Unit. Consult the Prospectus for a description of those features which are to be included in the Unit.

PARAMOUNT

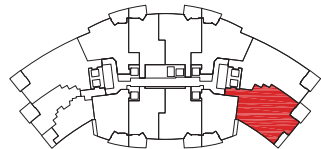
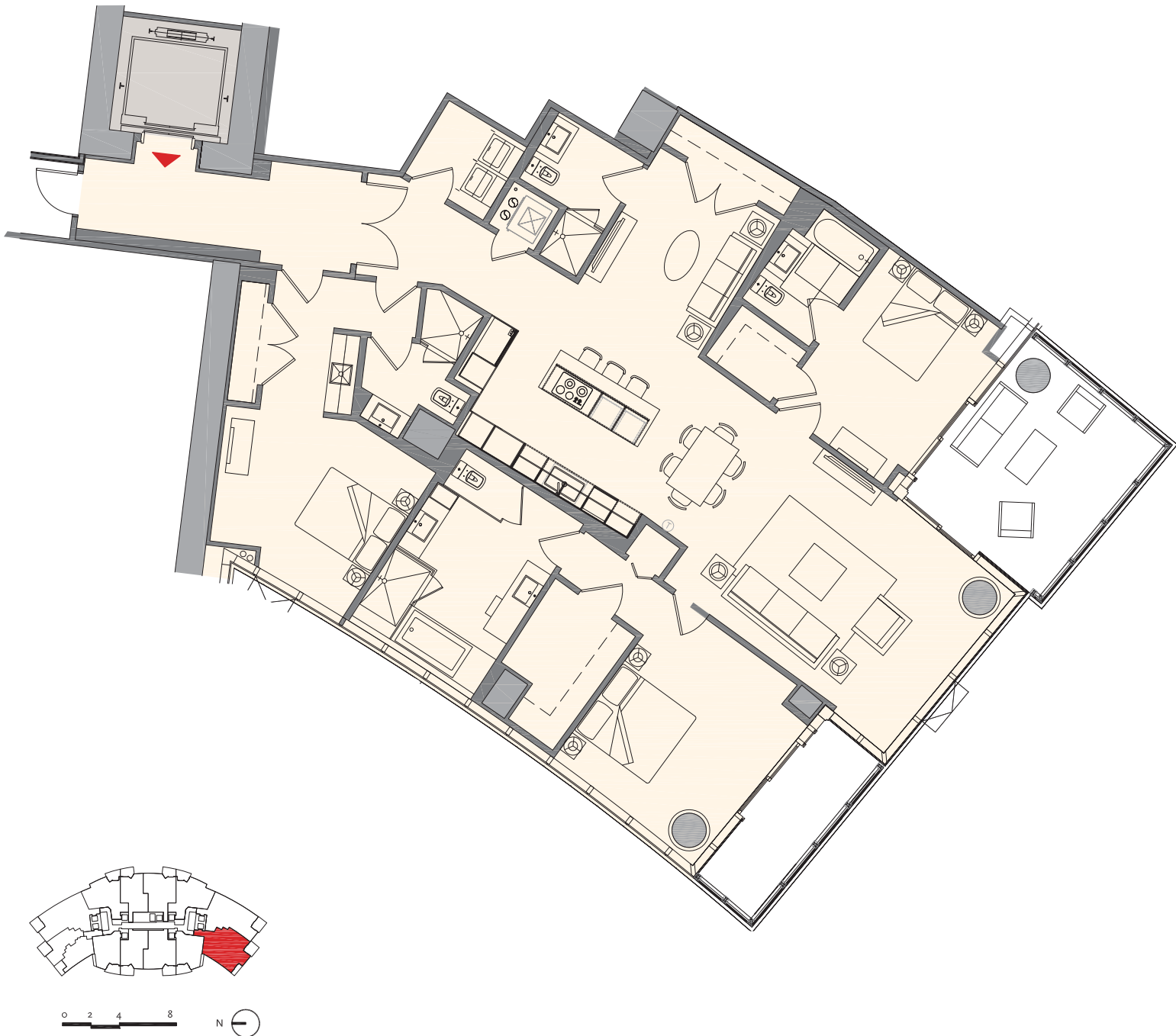
MIAMI WORLDCENTER




Residencia E2 | 12

3 Dorm + Den | 4 Baños

Total:	2,611 sq. ft.	243 m ²
Interior:	2,320 sq. ft.	216 m ²
Exterior:	291 sq. ft.	27 m ²

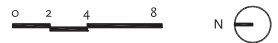
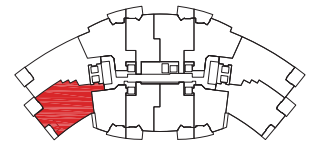


 These drawings are conceptual only and are for the convenience of reference. They should not be relied upon as representations, express or implied, of the final detail of the residences. Units shown are examples of unit types and may not depict actual units. Stated square footages are ranges for a particular unit type and are measured to the exterior boundaries of the exterior walls and the centerline of interior demising walls and in fact vary from the area that would be determined by using the description and definition of the "Unit" set forth in the Declaration (which generally only includes the interior airspace between the perimeter walls and excludes interior structural components). Note that measurements of rooms set forth on this floor plan are generally taken at the greatest points of each given room (as if the room were a perfect rectangle), without regard for any cutouts. Accordingly, the area of the actual room will typically be smaller than the product obtained by multiplying the stated length times width. All dimensions are approximate and may vary with actual construction, and all floor plans and development plans are subject to change. All fixtures and items of finish, furnishing and decoration are for display only and are not to be included with the Unit. Consult the Prospectus for a description of those features which are to be included in the Unit.

Residencia E1 | 02

3 Dorm + Den | 4 Baños

Total:	2,611 sq. ft.	243 m ²
Interior:	2,320 sq. ft.	216 m ²
Exterior:	291 sq. ft.	27 m ²



Residencia D2 | 09

2 Dorm + Den | 3 Baños

Total:	1,952 sq. ft.	181 m ²
Interior:	1,753 sq. ft.	163 m ²
Exterior:	199 sq. ft.	18 m ²



Residencia D1 | 03

2 Dorm + Den | 3 Baños

Total:	1,952 sq. ft.	181 m ²
Interior:	1,753 sq. ft.	163 m ²
Exterior:	199 sq. ft.	18 m ²



PARAMOUNT

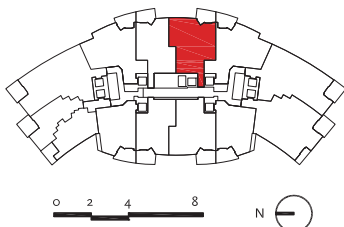
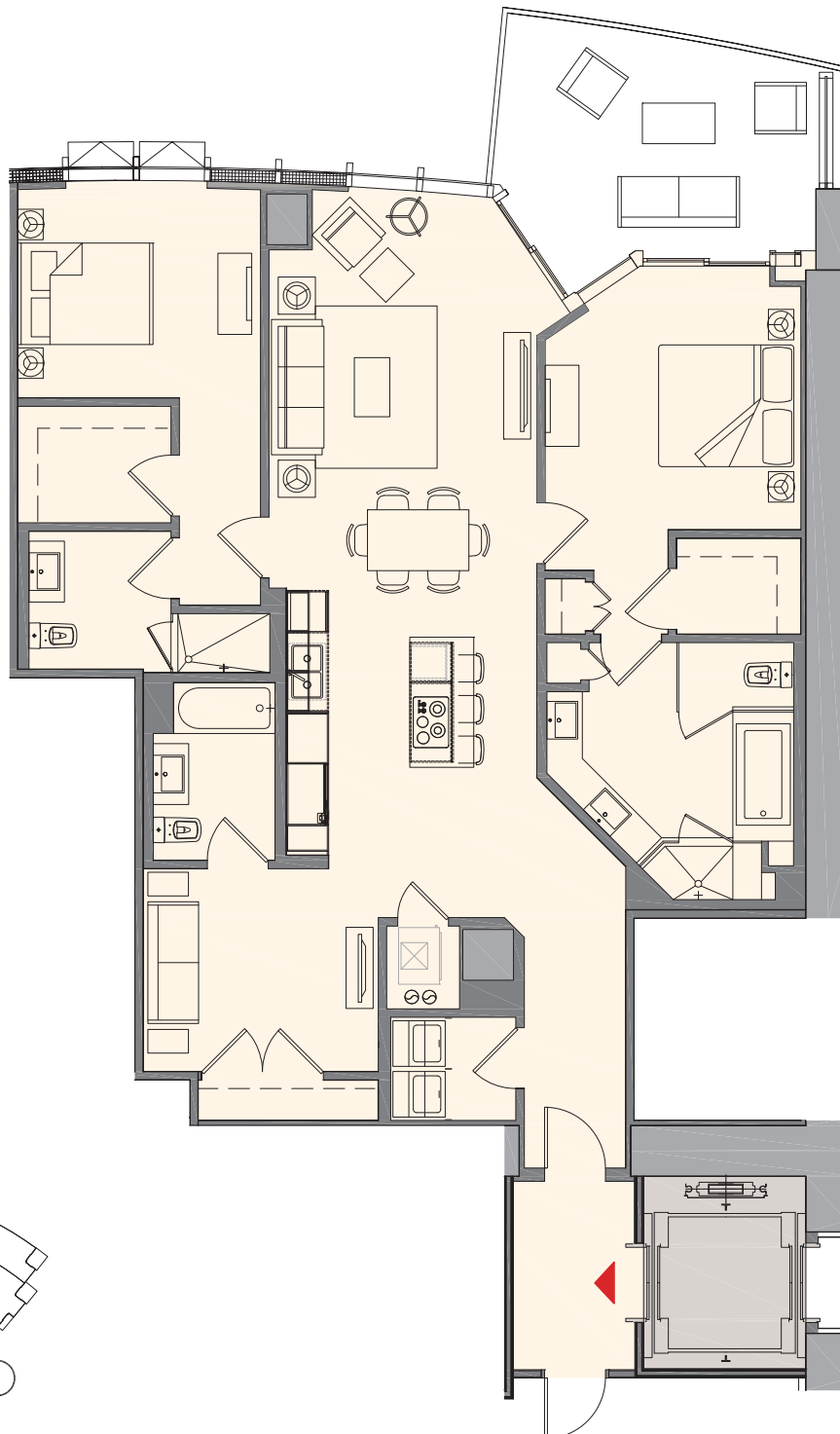
MIAMI WORLDCENTER




Residencia C2 | 07

2 Dorm + Den | 3 Baños

Total:	1,877 sq. ft.	174 m ²
Interior:	1,690 sq. ft.	157 m ²
Exterior:	187 sq. ft.	17 m ²




 These drawings are conceptual only and are for the convenience of reference. They should not be relied upon as representations, express or implied, of the final detail of the residences. Units shown are examples of unit types and may not depict actual units. Stated square footages are ranges for a particular unit type and are measured to the exterior boundaries of the exterior walls and the centerline of interior demising walls and in fact vary from the area that would be determined by using the description and definition of the "Unit" set forth in the Declaration (which generally only includes the interior airspace between the perimeter walls and excludes interior structural components). Note that measurements of rooms set forth on this floor plan are generally taken at the greatest points of each given room (as if the room were a perfect rectangle), without regard for any cutouts. Accordingly, the area of the actual room will typically be smaller than the product obtained by multiplying the stated length times width. All dimensions are approximate and may vary with actual construction, and all floor plans and development plans are subject to change. All fixtures and items of finish, furnishing and decoration are for display only and are not to be included with the Unit. Consult the Prospectus for a description of those features which are to be included in the Unit.

Residencia C1 | 08

2 Dorm + Den | 3 Baños

Total:	1,835 sq. ft.	170 m ²
Interior:	1,630 sq. ft.	151 m ²
Exterior:	205 sq. ft.	19 m ²

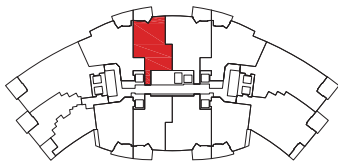
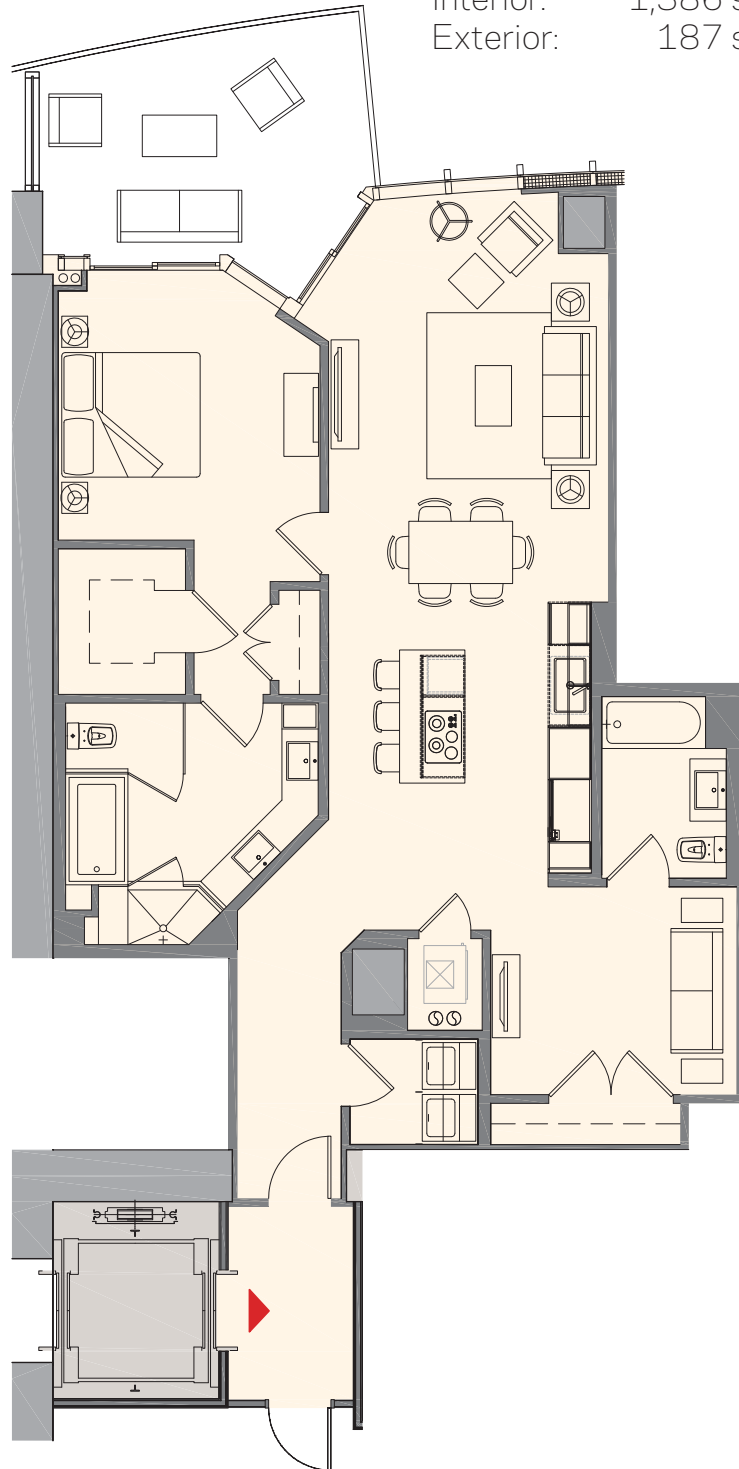


 These drawings are conceptual only and are for the convenience of reference. They should not be relied upon as representations, express or implied, of the final detail of the residences. Units shown are examples of unit types and may not depict actual units. Stated square footages are ranges for a particular unit type and are measured to the exterior boundaries of the exterior walls and the centerline of interior demising walls and in fact vary from the area that would be determined by using the description and definition of the "Unit" set forth in the Declaration (which generally only includes the interior airspace between the perimeter walls and excludes interior structural components). Note that measurements of rooms set forth on this floor plan are generally taken at the greatest points of each given room (as if the room were a perfect rectangle), without regard for any cutouts. Accordingly, the area of the actual room will typically be smaller than the product obtained by multiplying the stated length times width. All dimensions are approximate and may vary with actual construction, and all floor plans and development plans are subject to change. All fixtures and items of finish, furnishing and decoration are for display only and are not to be included with the Unit. Consult the Prospectus for a description of those features which are to be included in the Unit.

Residencia B2 | 05

1 Dorm + Den | 2 Baños

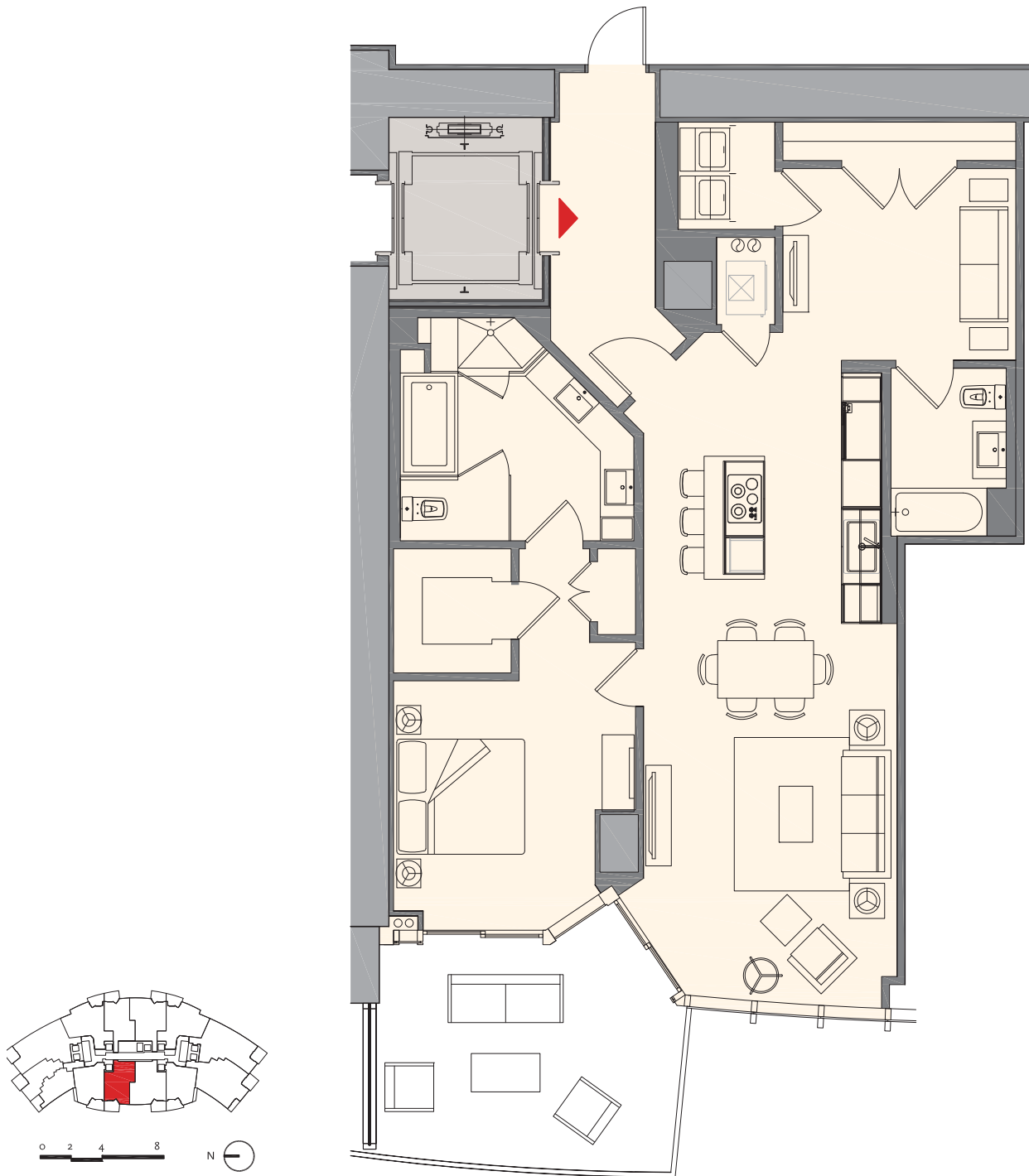
Total:	1,573 sq. ft.	146 m ²
Interior:	1,386 sq. ft.	129 m ²
Exterior:	187 sq. ft.	17 m ²



Residencia B1 | 06

1 Dorm + Den | 2 Baños

Total:	1,521 sq. ft.	141 m ²
Interior:	1,318 sq. ft.	122 m ²
Exterior:	205 sq. ft.	19 m ²



Residencia A2 | 10

1 Dorm + Den | 2 Baños

Total:	1,491 sq. ft.	138 m ²
Interior:	1,294 sq. ft.	120 m ²
Exterior:	197 sq. ft.	18 m ²

